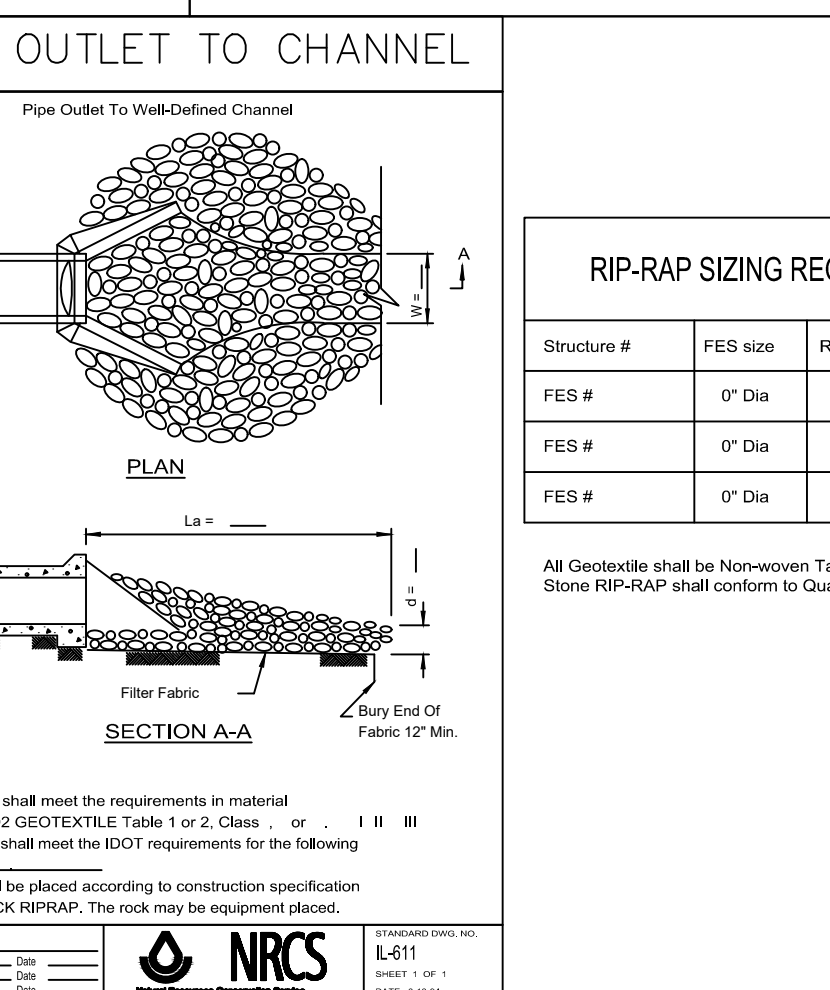
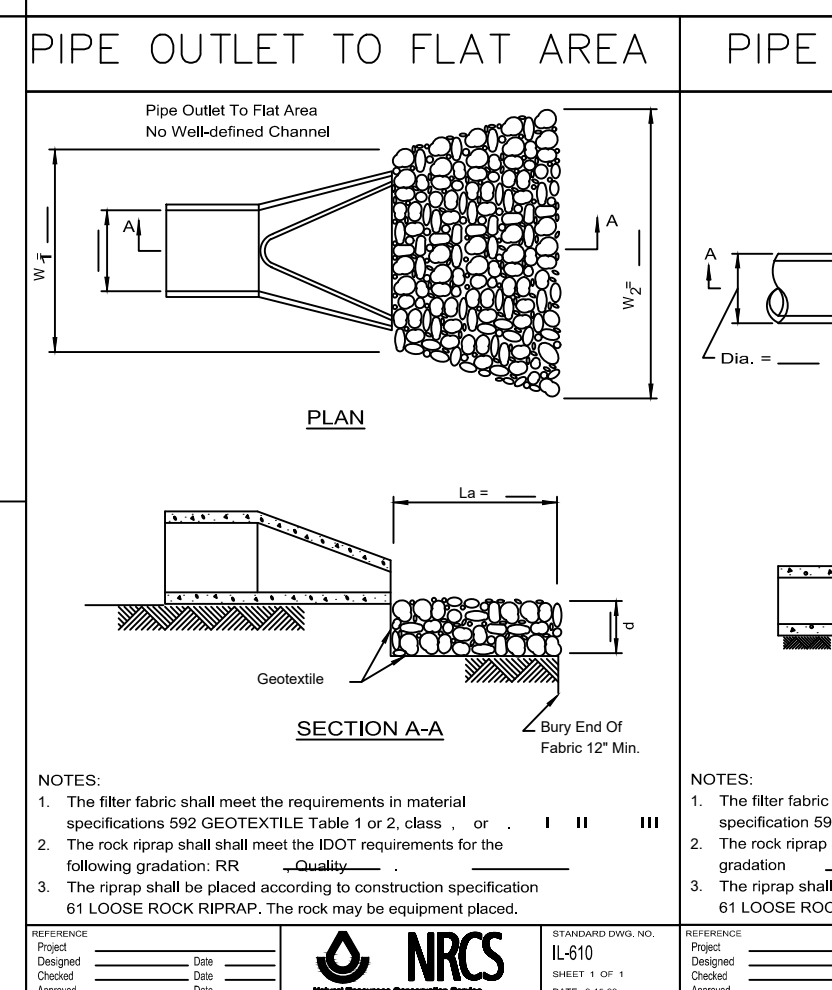
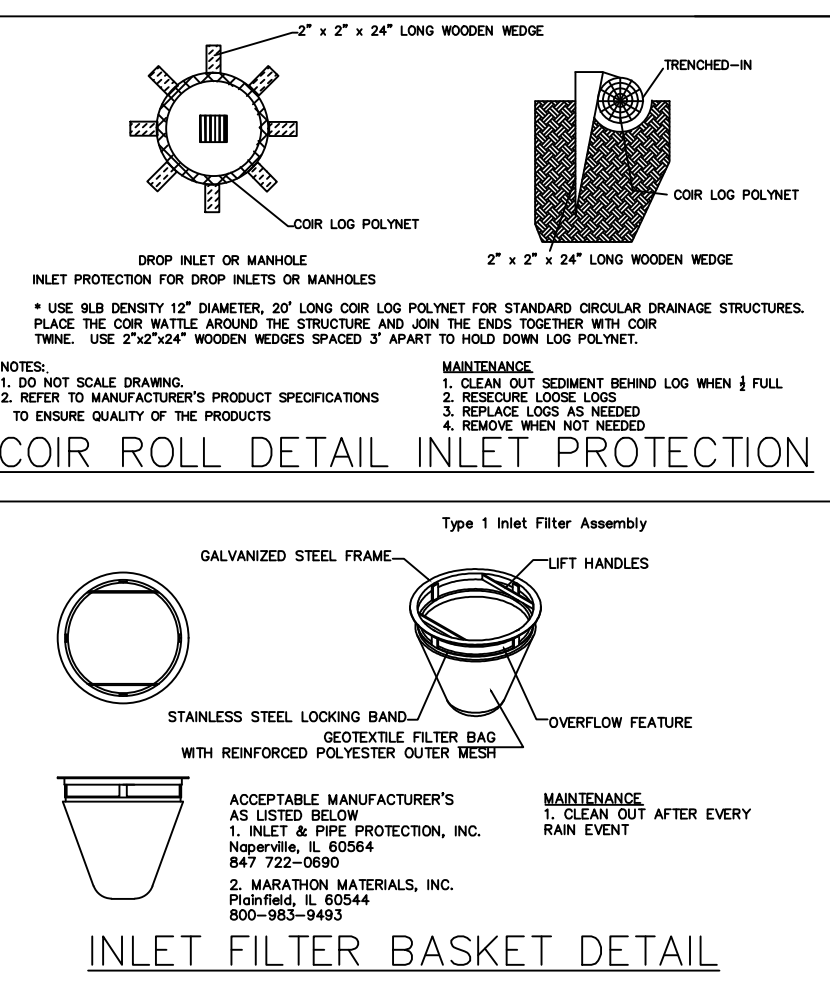
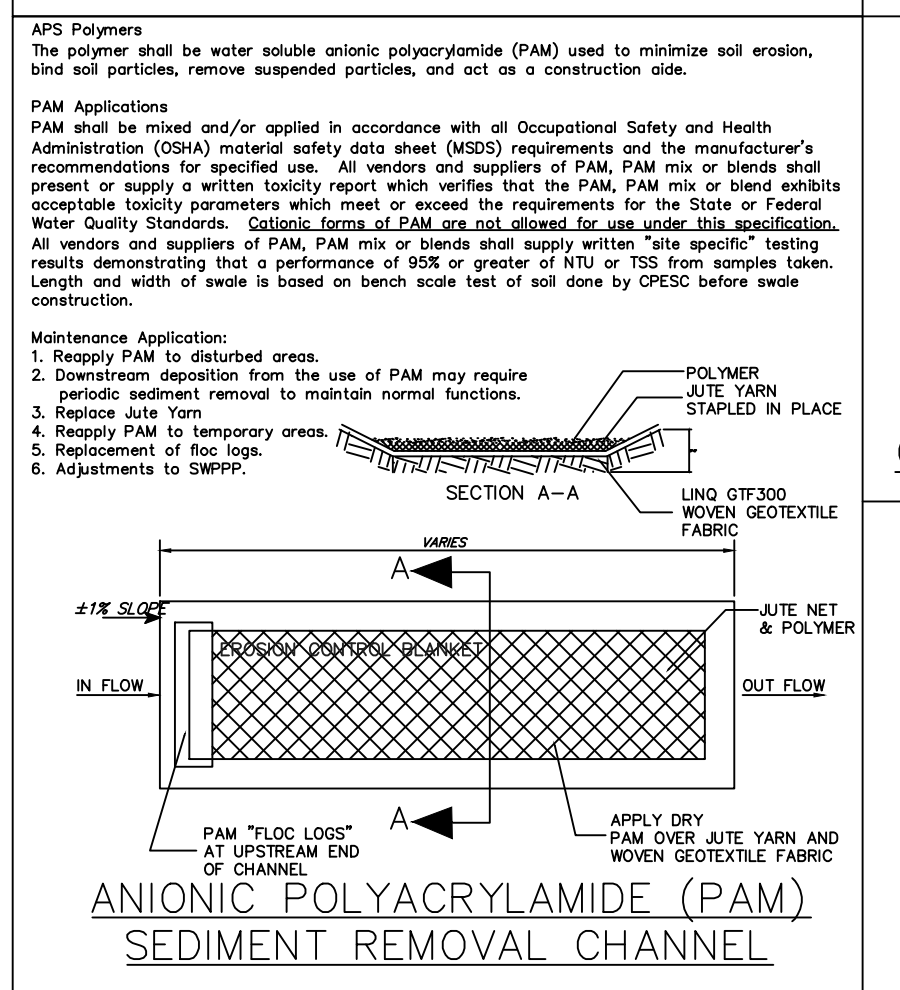
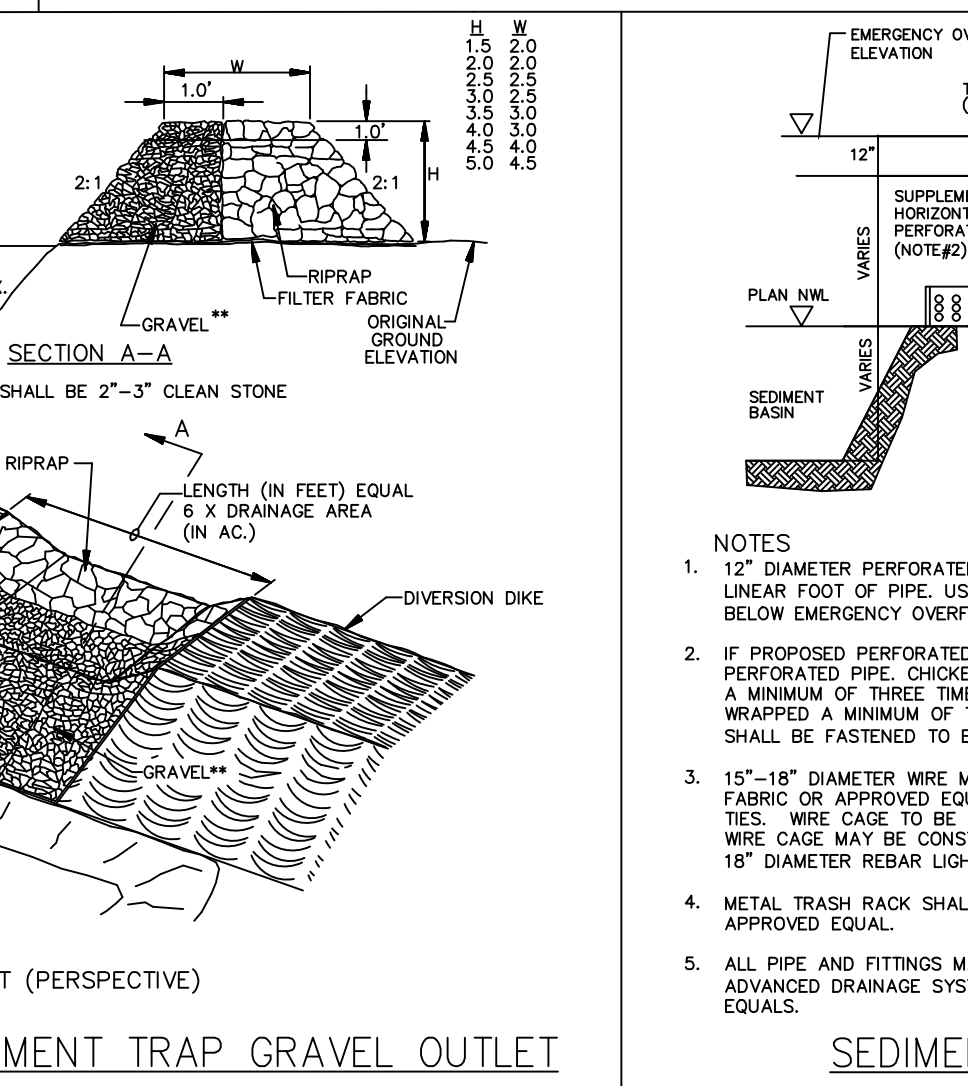
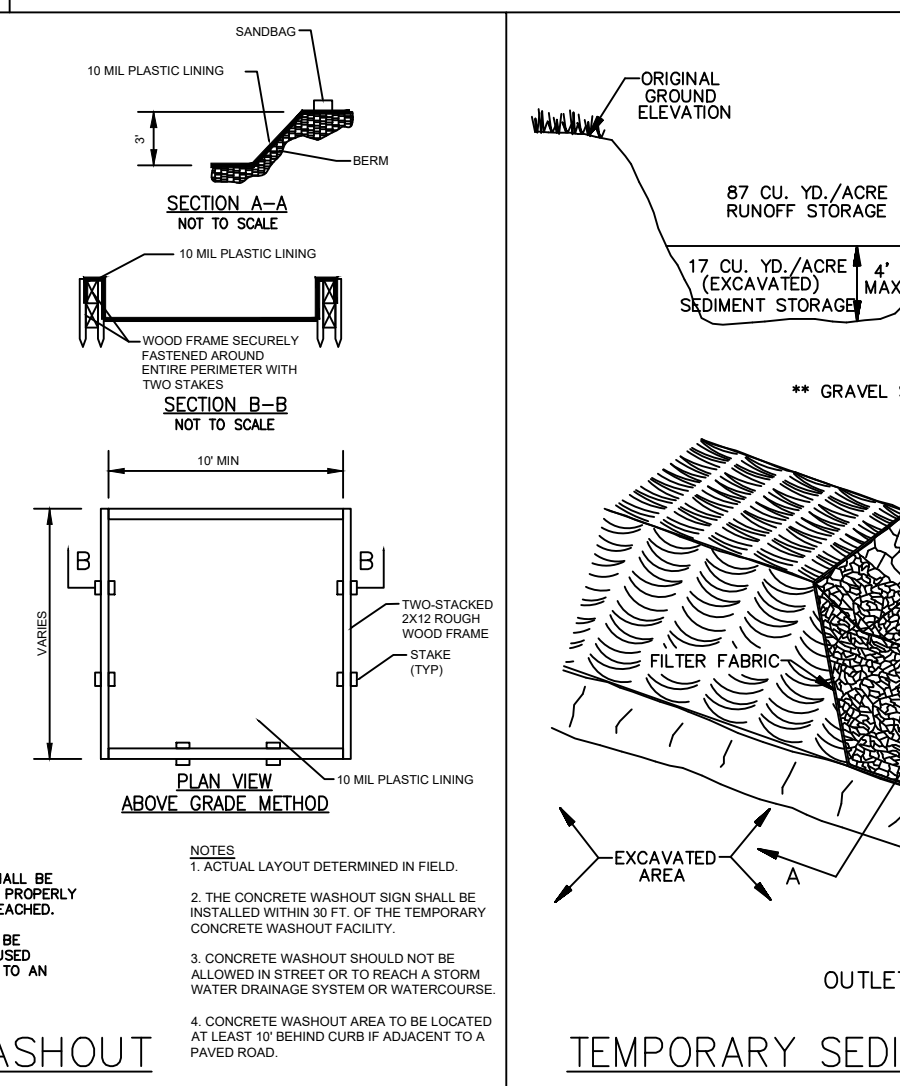
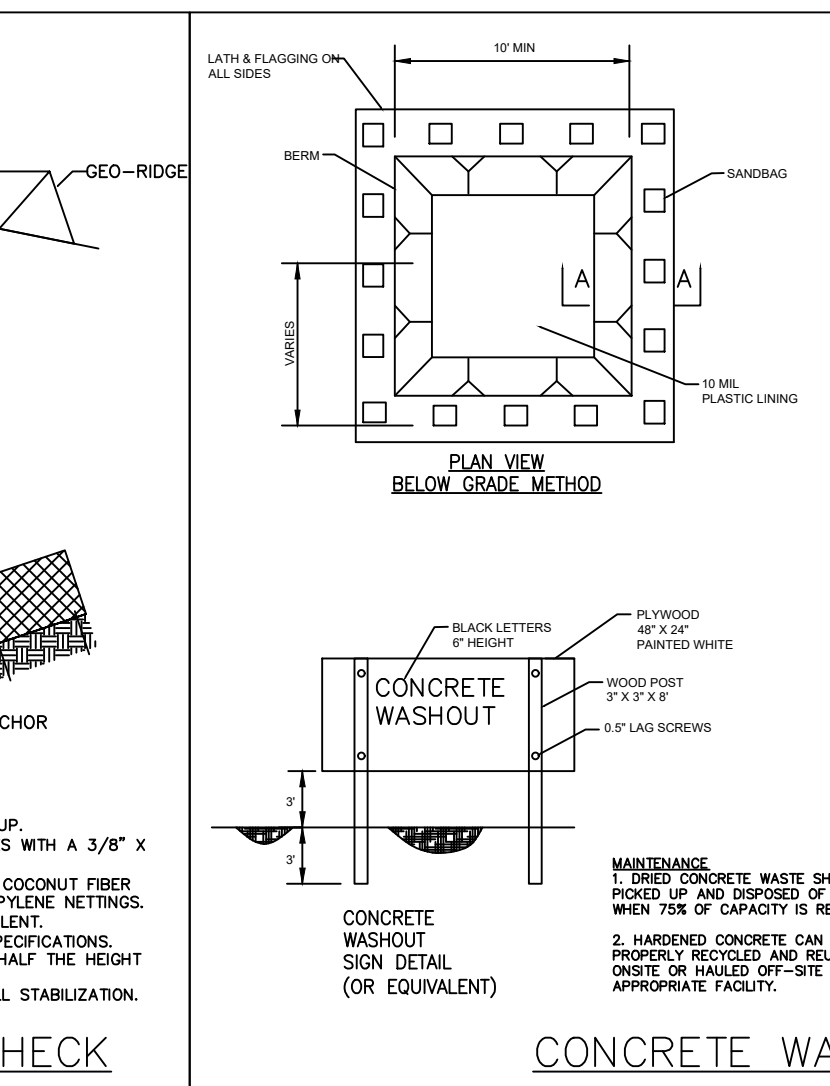
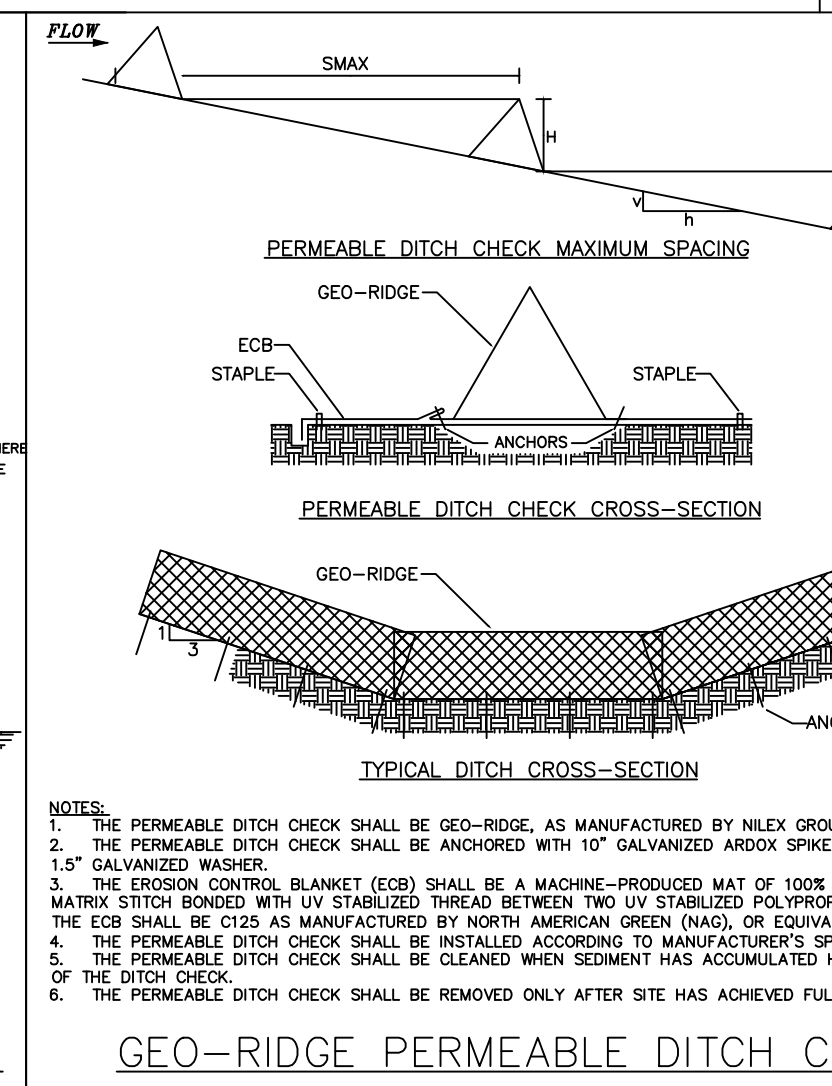
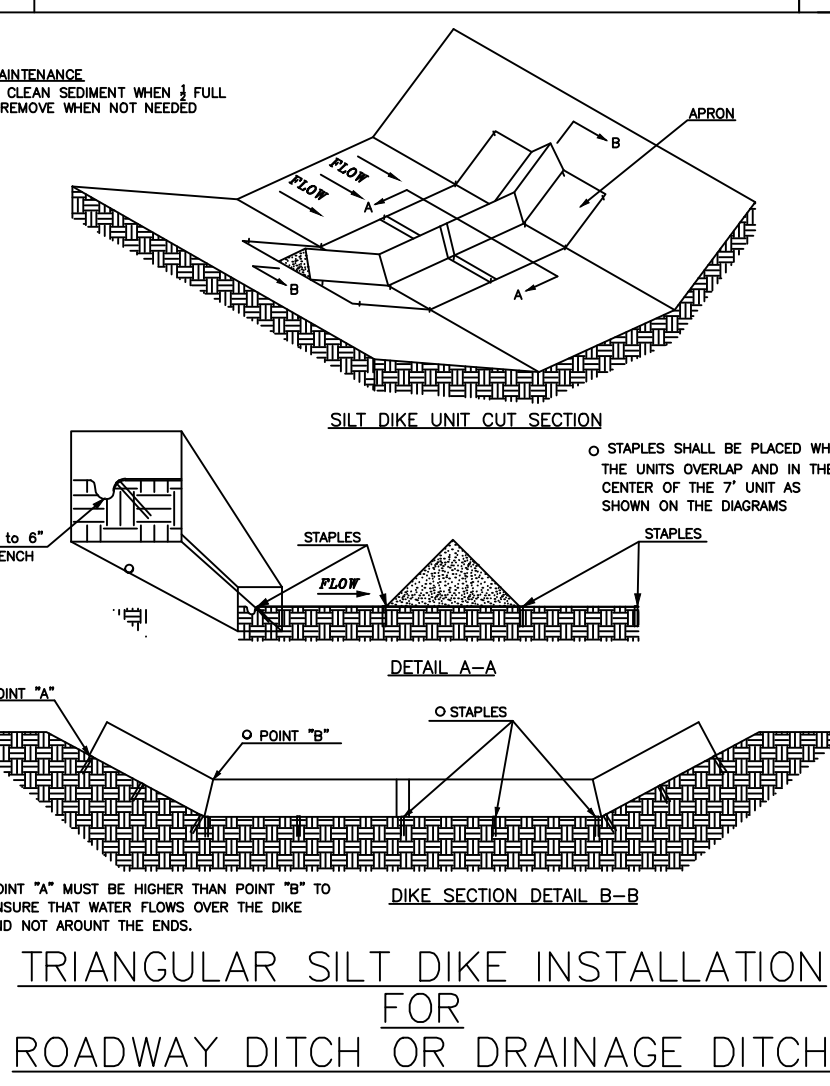
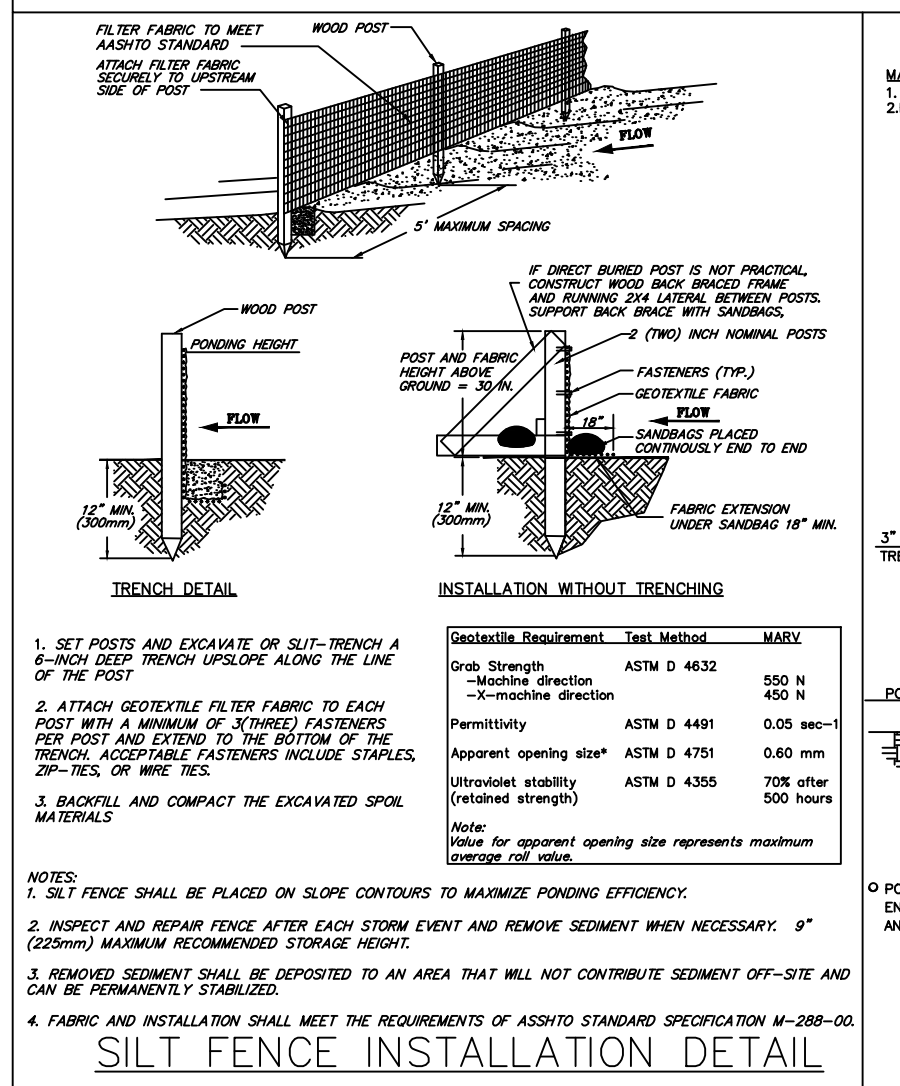


TYPICAL SOIL PROTECTION CHART

Stabilization Type:	JAN	FEB	MAR	APR	MAY	JUN	JUL	AUG	SEP	OCT	NOV	DEC
Permanent Seeding		A			X	X	X	X	X	X		
Dormant Seeding	B											
Temporary Seeding		C			X	X	X	X	X	X		
Sodding		E	X	X	X	X	X	X	X	X		
Mulching		F										

A = Kentucky Bluegrass @ 90 lbs/ac. Mixed with Perennial Ryegrass @ 30 lbs/ac.
B = Kentucky Bluegrass @ 135 lbs/ac. Mixed with Perennial Ryegrass @ 45 lbs/ac.
C = Spring Oats @ 100 lbs/ac.
D = Wheat or Cereal rye @ 150 lbs/ac.
E = Sod
F = Straw Mulch (Hydramulch or use Straw Blanket) @ 2 tons/ac.
XXX = Irrigation needed.
Irrigation should be provided as necessary to thoroughly establish intended growth.



RIP-RAP SIZING REQUIREMENTS

Structure #	FES Size	Rock Size	Rock Thickness (s)	Top Width (W)	Bottom Width (W)	Length (L)	Area (A)
FES #	0' Dia	RR-3	0'	0'	0'	0'	0.0
FES #	0' Dia	RR-4	0'	0'	0'	0'	0.0
FES #	0' Dia	RR-3	0'	0'	0'	0'	0.0

All Geotextile shall be Nonwoven Type 1 Class 2 material Stone Rip-Rap shall conform to Quality and Gradation as noted in SEC 1005 of IDOT SRRB

